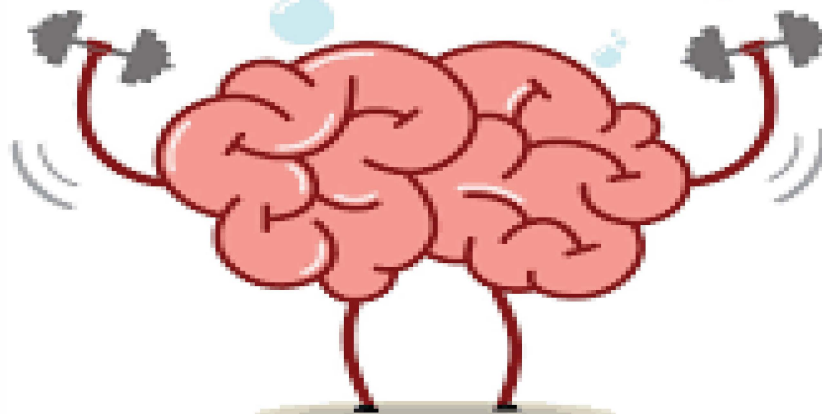


West Orange Rec presents.....
EXERCISE



Your Brain!

Weekly Crossword Puzzles & Word Searches
with a bit of a West Orange twist

CONTRIBUTERS

Joe Fagan

Edwin Johnson

Bill Kehoe

WO residents are encouraged to submit your best ideas for crossword puzzles and word searches to recreation@westorange.org

*****WEST ORANGE THEMES ARE IDEAL*****

May 8, 2020

Our Schools

A	E	D	I	S	O	N	X	S	C	H	I	T	I	H	N	B	H	K	H
F	V	M	S	R	I	N	Z	K	Q	H	U	Y	E	D	A	F	D	R	P
Z	M	G	C	A	U	J	H	X	Z	N	Y	W	E	M	Z	E	B	F	N
J	Q	B	I	R	X	F	B	Q	E	R	S	L	U	W	C	K	C	C	E
G	S	E	Q	N	F	N	Y	J	D	Y	K	Q	J	Y	F	E	B	S	O
M	E	W	S	X	V	O	P	T	M	G	O	F	C	K	N	M	X	Y	Q
B	W	D	J	K	K	T	Z	K	R	Z	Q	K	H	U	H	W	H	R	K
O	U	J	T	E	K	G	I	D	D	E	A	E	J	I	O	A	C	O	J
B	U	E	L	X	Z	N	L	A	Q	Q	B	C	W	H	Z	M	U	G	Q
U	N	L	E	H	F	I	B	S	J	W	T	I	S	E	L	V	R	E	P
K	Y	F	V	H	Q	H	V	I	P	C	A	V	L	T	A	T	H	R	M
X	X	N	E	R	A	S	A	F	K	V	H	B	Q	N	C	I	D	G	M
M	W	O	S	E	C	A	U	U	L	M	K	I	S	R	X	L	O	E	A
U	Q	C	O	L	T	W	E	D	W	P	G	W	V	X	I	D	O	K	N
P	J	U	O	I	G	H	N	T	Z	W	W	V	H	U	K	O	W	U	E
H	L	T	R	P	E	M	Y	Z	U	J	W	V	J	X	U	R	D	T	D
T	T	S	V	T	N	A	S	A	E	L	P	T	M	Y	N	J	E	R	N
H	O	C	Y	S	B	S	U	T	C	G	N	Q	J	B	T	C	R	R	M
M	G	R	P	N	S	Z	U	W	P	O	U	D	P	V	X	Z	L	E	J
V	C	O	Z	K	Z	G	U	Q	M	R	K	S	I	B	K	N	I	C	Q

EDISON
KELLY
REDWOOD
WASHINGTON

GREGORY
LIBERTY
ROOSEVELT
WOHS

HAZEL
MT PLEASANT
ST CLOUD



National Parks

P I J R O C K Y M O U N T A I N J N G W
N S V F F F U V Q A I T P L S F V R J E
H J X J Z Q R A Z Z G P E T B X A L C M
T X Y Q F X S E F I S E H R E N U D Y A
X E M U K I F C Z S O S V Q D L P U P H
R N O G R D Z J M J L N B C W C F C O J
V O S E I V S T P H U C A L I Z I J I N
D T R M V C N K Y C V N P F J N W O N K
X S N I A T N U O M Y K O M S T A E R G
O W H O G B I V M O N U E U R G U O S M
K O L C R J E Y N Q V O H V F U N V M W
Z L E T I M E S O Y U O T Q A N C U I G
R L B A C A D I A X E H W E A Z Y Y L D
Z E D M E F S I L F G E Q G T C A A P R
U Y Y W H Q B Z J O N R O U Q D C F S Z
J F W Y C I P M Y L O H H Q A I N X I E
J Z X J J J O S H U A T R E E D B A L V
R O U E E X M X P Y T Z U R U X X Z R M
F B L R Q R P K U Z R X F M O F C O D G
Z W O T Z R B C B L S W J F F G W G Z Z

ACADIA

CUYAHOGA

GLACIER

GRAND CANYON

GRAND TETON

GREAT SMOKY MOUNTAINS

JOSHUA TREE

OLYMPIC

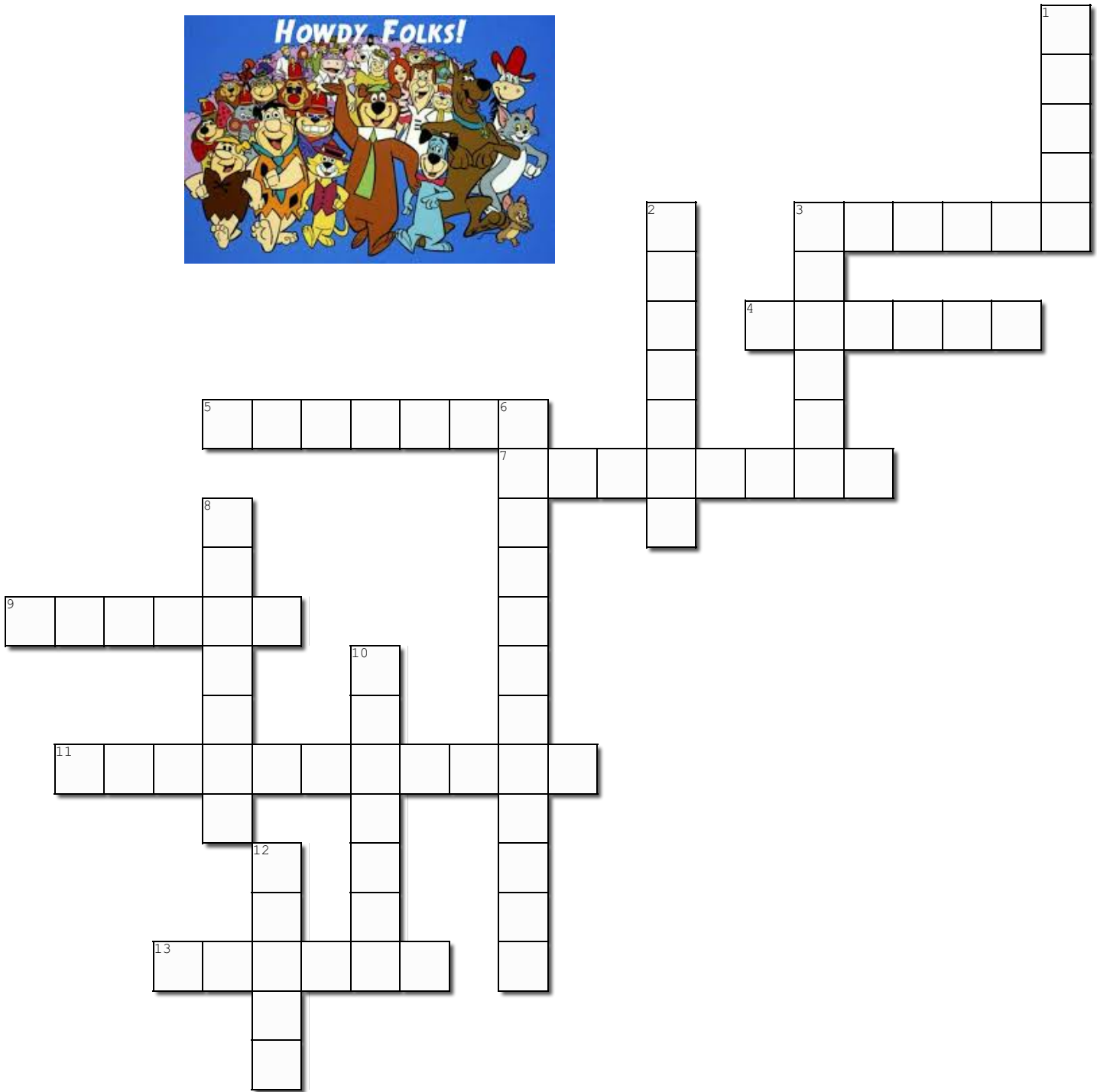
ROCKY MOUNTAIN

YELLOWSTONE

YOSEMITE

ZION

Cartoons of the 60s



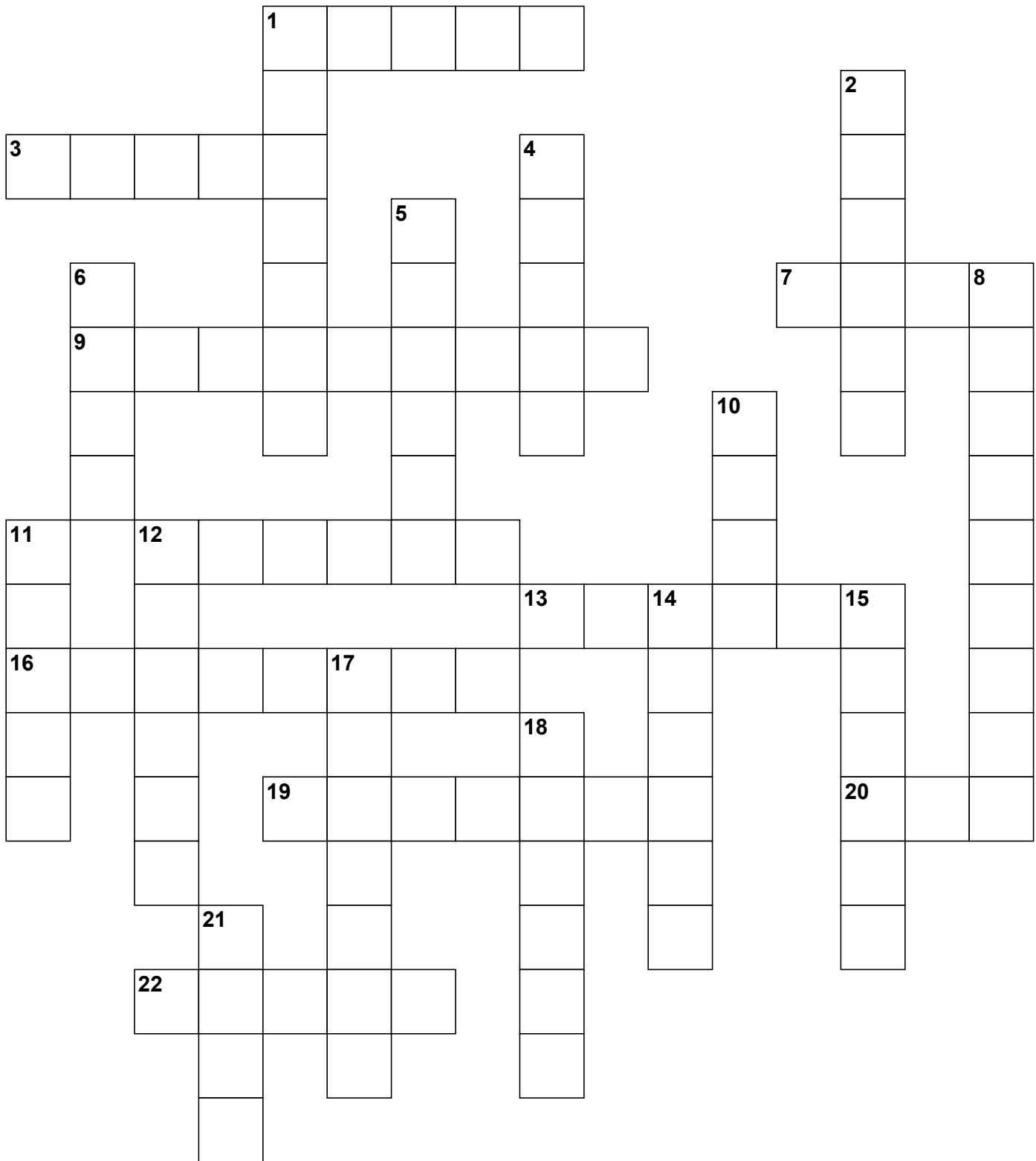
Across

3. Voice of Mr. Magoo
4. His gang included Choo Choo, Brain and Benny the Ball
5. Popeye's Superfood
7. Speed of Lightning
9. Courageous Cat and Mighty _____
11. The Rubbles lived next door
13. Quick Draw

Down

1. Pixie, Dixie and Mr. _____
2. Dastardly and _____
3. Yogi's Sidekick
6. This hound's sidekick was Ding-a-Ling
8. George's boss was Mr. Spacely
10. She and Boris worked for Mr. Big
12. Crusader Rabbit and Ragland T. _____

MOTHER'S DAY



MOTHER'S DAY

ACROSS

- 1 Young human
- 3 Send a letter
- 7 Female Spouse
- 9 Child or descendent
- 12 Person whom you know well and like and who likes you
- 13 Sound judgment
- 16 Call to mind
- 19 Bunch of flowers
- 20 Embrace affectionately
- 22 Flowers with thorny stems

DOWN

- 1 To care for
- 2 Have extreme fondness
- 4 Put into the ground to grow
- 5 Area used for growing flowers
- 6 Place where a person lives
- 8 Expressing warm affection
- 10 Printed document sent on a special occasion to a friend
- 11 Act of bringing a new baby into the world
- 12 Group made up of parents and their children
- 14 Female having the same parents as another person
- 15 Female parent
- 17 Male person have the same parents as another person
- 18 First day of the week
- 21 Piece of writing with words that rhyme

Sudoku Puzzle

Fill in the grid with digits in such a manner that every row, every column and every 3x3 box accommodates the digits 1-9, without repeating any.

		8		3				5
2	3	1	5		4			8
			6			1	7	
	2		4	5		3		
1		4				8		2
		9		2	8		4	
	4				6			
6		7	3		5	2	8	4
9				4		6		

		3			5	7	8	
2			3	4	7		9	
1	7					6		
6		7		3			2	
5	9				4	8		1
				7	1			6
7	5		2		3		4	8
		9			6	5		
3			4			2		

8	5		7				4	
			8			1		5
7		9	1		5		6	
	2	7	6		4	8		3
		3			8	4		
5		8			3	6	2	
	9		5	2			8	
2		4		9				
	7				6	9	3	2

2	7		9	3			1	
		4			5	6	9	
		5			7		3	
	4	9	3			2		8
		8		7		1		
7		2			8	3	4	
	5		7			9	2	
		1						
	9		1	2	3		8	4